

# EUREKA EXPRESS

VOL XXXIV No. 4 Circ 298

JUNE 2013

## Whether it is...



OR...



... it's **GAME ON**



## CONTACT LIST 2013

Badminton – Junior	Vanessa Mason	8295 314
Bowls – Tauwhare	Robin Bargh	8241 819
Eureka Express	Editor - Gail Mayall	8241 758
	<a href="mailto:editor@eurekaexpress.co.nz">editor@eurekaexpress.co.nz</a>	8241 028 Fax
	Treasurer	
	– Gayle Orr	8241 713
Newstead School		8565 946
Tauwhare School		8240 864
Pukeko Pre School Tauwhare		8240 860
Farm Discussion Group	Brett Gordon	8241 108
Hall Bookings	Gail Mayall	8241 758
Cubs & Scouts	0800 SCOUTS	0800 726 887
Newstead Veterinary Services	Small Animals	8564 522
Visser Vets	Large Animals	0800 847 737
		8243 696
Waikato District Councillor	Rob McGuire	8243 645 Fax
Eureka Ward	<a href="mailto:robmcguire@xtra.co.nz">robmcguire@xtra.co.nz</a>	0274 970 966
Drainage – Environment Waikato		
	Steve Edwards	021 941 080
R D 6	Sally & Erna	8546 532
R D 7	Gary Self	0274 557 768
Justice of the Peace	Gail Mayall	8241 758

### PHOTOCOPYING

The *Eureka Express* photocopier is community owned and thus available for your personal photocopying needs. Costs – 20c per page or 10c per page with own paper.

Please phone Gail 8241 758 to arrange time for use.

---

### REPORTING POSSIBLE CRIMINAL ACTIVITY

The suburban Police Stations are now closed to the public so criminal activity should be reported by visiting the Hamilton Police Station in Bridge Street or by phoning them on 07 858 6200.

The following website explains the procedure in more detail –  
<http://www.ns.org.nz/index/html/Factsheets/whentocall111>

---

### JUSTICE OF THE PEACE

Gail Mayall JP is authorized to:

- ✓ Certify documents
- ✓ Witness signatures
- ✓ Take declarations or affidavits

This is a free service. Please phone to make an appointment. 824 1758

## GUEST EDITORIAL

I have just recovered from ten days of the flu and dearest has informed me I am to write the guest editorial for 'The Express'; due in two days!

I shan't complain but 'keep calm and carry on'. So, here goes...

We have resided in Schollum Road for a little over eight years after purchasing our 6.6 acre bare block ten years ago - before the housing price boom and economic demise.

Born a townie but having a horse obsessed childhood dream of living in the country, immersed in my own horsey-ness, spurred our action to obtain our own piece of land. I was tired of paying grazing fees and the dogs needed more space than town sections could provide.

We first relocated the cottage on to a somewhat stark piece of land with little more than a trough and boundary fencing. Then, as the children arrived (horse numbers dropped and dogs moved outside) we found that we needed more living space - hence our new residence built three years ago. At the time Alistair's father, Noel, was looking to downsize his property in Hamilton and now resides in the cottage.

We now find ourselves with a 5 year old at Tauwhare School and a 3 year old (going on 13) attending Puketaha preschool, keeping our lives busy and unpredictable.

The commute to work provides some valued thinking/singing/chatting time and is not half bad if petrol prices would stop rising. The Landy is a bit thirsty and I have threatened to take the horse instead.

The sand arena destined for the front paddock has been put onto the ten year plan, but as we have found 'good things come to those who wait'.

We love our lifestyle choice with our work/life balance just about right. Our land is enough to provide some form of self sufficiency whilst not weighing us down, and ultimately provides us with a playing ground and nurturing environment for the whole family - two feet and four.

Sarah Ellesmere

## RAINFALL

	May 2013	Year to 31 <sup>st</sup> May
Total (mm)	176.5	371
Average (1994-2013)	113	431
Difference	+63.5	-60

Rainfall recorded on 18 days.



## SNIPPETS



**BIRTHS – NEW BABY CONGRATULATIONS** to **Cindy and Matthew Newman** of Eureka Road who were delighted to welcome a darling daughter, **Sarah Katelyn** on June 19. A lovely **sister for big brothers Ben and Jon**. Very best wishes to all.

**NEW GRANDCHILD CONGRATULATIONS** to **Gayle and Lionel Orr** who welcomed with love a dear new grand daughter on June 17. A darling **daughter, Gracie Aroha Orr, for Phillip and Celia**. Very best wishes to all.

**EUREKA MOTORS STAFF WELCOMES**. Two new staff members have recently joined the Eureka Motors team. **Sheree Martin** (Colin's niece) is currently front person in the shop and **Paul Deane** from Huntly is now in the workshop with Andrew, Eion and Colin. Hi to you both.

**FAREWELL TO EUREKA** to **Ian Manning** of Hooper Road. Ian is a long term resident and business owner who has retired for health reasons, sold his home and business and plans to move to Te Aroha. Thank you Ian for your term on the Hall Committee and your community input. All the best Ian.

Farewell also to **Troy Andrews** who is moving from Hinton Road, King's cottage, to Te Aroha. All the best Troy.

**LADIES NIGHT AND CPR PRACTICAL NIGHT**. A big thank you must go to **Becky Walling** for organising these two successful evenings. The Ladies Night was well attended and we are indebted to Fonterra for providing the lovely cheeses that were enjoyed by all and also sincerely thank RD1 for providing two jackets for the lucky draws.

The CPR night was also well worthwhile for those who took the time to upskill. Special **thanks to Morrinsville St John Ambulance Officers, David, Nicola and Becky**.

**CONGRATULATIONS** to **Millie Wallace and Trinaka Kenny** who, after two-three trials, were selected as members of the Waikato Under-9 Girls Soccer Team. Well done girls.

Sincere condolences are extended to Jo and Mike Deverson, Rachael, Scott and Simone of SH26 on the death of Jo's mother, Mrs Marilyn Young, in Hamilton on June 16. A dearly loved Mum and Nana.

## EUREKA EXPRESS

ADVERTISING RATES		CONTACTS – Gail or Gayle	
<i><b>Classified Advertisements</b></i>	<i><b>Free</b></i>	<i><b>Gail Mayall (Editor)</b></i>	<i><b>Gayle Orr (Treasurer)</b></i>
<i><b>Small Business Advertisements</b></i>	<i><b>\$10 / month</b></i>	<i><b>70 Eureka Road</b></i>	<i><b>1139 SH26</b></i>
<i><b>• x 10 insertions</b></i>	<i><b>\$80 / year</b></i>	<i><b>Ph 8241 758</b></i>	<i><b>R D 6, HAMILTON 3286</b></i>
<i><b>One Third Page Advertisement</b></i>	<i><b>\$15 / month</b></i>	<i><b>Fax 8241 028</b></i>	<i><b>Ph 8241 713</b></i>
<i><b>• x 10 insertions</b></i>	<i><b>\$120 / year</b></i>	<i><b>e-mail:</b></i>	<i><b>e-mail: <a href="mailto:sorr@xtre.co.nz">sorr@xtre.co.nz</a></b></i>
<i><b>One Half Page Advertisement</b></i>	<i><b>\$20 / month</b></i>	<i><b><a href="mailto:editor@eurekaexpress.co.nz">editor@eurekaexpress.co.nz</a></b></i>	
<i><b>• x 10 insertions</b></i>	<i><b>\$160 / year</b></i>		

## SNIPPETS CONTINUED .....

**HILLCREST HIGH SCHOOL GREAT BARRIER EXPERIENCE** - Year 10 students were fortunate to participate in a five week experience at the Sir Edmond Hillary Outdoor Pursuits Centre on Great Barrier Island. 30 boys had an incredible time in May and 30 girls are at present on the Island undergoing a very memorable time. There are a number of our rural children lucky enough to take part in this wonderful opportunity. **Chloe Meredith** earned a Scholarship through the Gallagher Group to go along.



# EUREKA BADMINTON CLUB

## JUNIOR CLUB NEWS

Eureka Junior Badminton club  
Last month we had a Yankee Tournament. Congrats to Sam Sinclair and Judy Ann Bull you came first. Great night had by all. Come down and join us.  
Vanessa Mason 8295314.



## ST FRANCIS CO-OPERATING PARISH

MANSEL AVENUE, HILLCREST

### ANGLICAN - METHODIST- PRESBYTERIAN

Country Services: Matangi  
Tauwhare

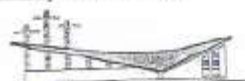
2<sup>nd</sup> Sunday of Month @ 11.00am  
4<sup>th</sup> Sunday of Month @ 11.00am

KFC Kids for Christ

1<sup>st</sup> Sunday 9.30am @ Tauwhare Sunday School

Ministry Team Contacts:

Tony Wescott 8565110



Parish Office 8567866



## WELCOMES

It is a pleasure to warmly welcome the new June arrivals in Eureka. We trust you are all well settled in, keeping warm and dry and will enjoy your time in Eureka be it brief or long term.

- On Mace's farm on Waverley Road it is welcome to **Mark and Hayley van Hellemond** and their **boys, 7 year old twins Sam and Will and three year old Carter**. The family is ex Te Hoe and yes, Mark is Brad's brother. They have been able to retain the van Hellemond phone number; 824 1034.
- To Eureka Road, on Hinton's farm, it is hello to **Jeff Woolford and his partner Lara** who have come from Ashburton. Phone 021 170 8511.
- Also working on the farm and living in the cottage is **Manish Parmar** who has family back in India. Manish is ex Te Awamutu. Phone 022 0900220.
- Still on Eureka Road, on Ace and Vicki Dance's property, it is hi to **Mike O'Neil and Renee Mouat**. Mike and Renee are engaged and happily planning an April 2014 wedding.
- New tenants in Colin Duncan's house on Masters Road are **Nathan Koretz and his partner Alissar (Ali) Boudreau** who is from Quebec, Canada. Hi to you both. Phone 824 1171.
- To SH26 on Colin Duncan's farm it is a warm welcome to Colin's son, **Anthony Duncan**, his fiancée **Barbara Thorn** and their eight month old daughter **Anika Lila-Bee**.
- On Hooper Road, on the van de Pas farm, we say Hi to **Tom and Nicole Marwick**. Tom has previously been contract milking for Wayne and Selina Berry (ex Eureka) at Tatuani. We wish them all the best in their first 50/50 position. Tom used to write for the Eureka Express a few years ago when he worked for DairyNZ. Nicole is a teacher at Morrinsville College. Welcome to you both. Phone 824 1692.
- To Schollum Road, working for Steve and Lisa Meek on Shirley Morrison's farm, is **Eden Woolston**. Eden hails most recently from Ngatea. Hi Eden.
- New owners of the Willis farm, corner SH26 and Tauwhare Road, are **Barry and Donna Caird**. Barry and Donna are Te Aroha folk but most recently from Mangateparu. They have three sons: **Shane is working on the farm, Matthew is in Palmerston North and Sam is Year 12 at St Peters**. Welcome to you all. Phone 824 1003.
- On Tauwhare Road, in the new house next to Cairds, it is welcome to **Raymond Copland and his partner Diane Hyslop** who both came from Scotland two years ago. Raymond is Product Manager for "FarmChief". Phone 824 1119.
- And on the opposite side of Tauwhare Road we say a belated hello to **Peter and Claire Warren** who are leasing Tom Lane's property; phone 824 1195

**A VERY WARM WELCOME TO YOU ALL.**

**[www.eurekaexpress.co.nz](http://www.eurekaexpress.co.nz)**

Yes we have a website. Thanks to the expertise and generosity of Wendy and John Morch and their internet business **IPNetGroup**, we are online. The site is still evolving and we welcome your input of ideas, suggestions, photos and feedback as to how this site could be used.

**Do contact Wendy on 8241 983 or Gail or a committee member.**

**[editor@eurekaexpress.co.nz](mailto:editor@eurekaexpress.co.nz)**

For all your articles, photos, ideas and suggestions you may now use the above email address. It could be easier to remember than Gail's or Gayle's.

## **LOCAL HISTORY**

Sadly our history book, "Eureka 1874 - 1984" is now out of print (but you could be loaned a copy to read or see it at the Library). However copies of the 2004 "School and District Jubilee" booklet are readily available and contain a synopsis of Eureka's history and development. For your copy, compliments of the Eureka Express Committee, please phone Gail or a committee member or collect from Eureka Motors.

## **TURLEY MURPHY BUS TIMETABLE**



**Leaves Morrinsville at 7:30am, 10:00am, 10:35am and 4:35pm**  
Allow approximately 10 minutes to reach Eureka. Stand on any corner of SH26 and the bus will stop. Buses are scheduled to arrive in Hamilton approximately 20 minutes later.

**Fares Ex-Eureka Adults \$3.80 - Child \$1.90 (concession cards available)**

**Buses leave Hamilton at 9:00am, 3:35pm & 5:15pm**  
**A Coromandel bus also leaves Hamilton at 1:20pm**  
(10:35am above from Morrinsville is the Coromandel bus too).

**Phone 07 884 8208**

## **EUREKA HALL**



Your local hall, the Eureka Community Centre as it is officially known, is always available for hire and you are encouraged to use it for meetings, functions - including weddings, birthday or anniversary celebrations - luncheons, dinners or any other gathering you may be considering.

**For bookings and hireage costs please phone Gail Mayall 8241 758**



Another busy month at Newstead School!

### Interest Activities

For six weeks; three in term 2 and three in term 3, the children, in mixed groups will participate in six different activities on a Friday morning. This term, from 8.45 to 10.15, we have scheduled these Friday's: 21 June, 28 June and 5 July.

The activities are: Ukulele (Whaea Nikki), Sports (Mrs Scrimgeour), Enviroschools (Ms Mather), Puppet Making (Mrs Bowen), Mosaics (Mrs Bracey), and Science Experiments (Mrs Malcolm).

### Grandparents Day (Thursday 27 June)

Grandparents are welcome to join us for a morning at Newstead. This is a wonderful opportunity to share learning and to celebrate school life.

We will gather for a welcome and singing in the Eureka Room as soon as the school day begins. During the rest of the morning there will be the opportunity to share learning in the class with the children. A morning tea is also planned, so Grandparents can meet each other.

### Jump Rope

Last Friday the playground echoed with the sound of skipping ropes. Thank you, Judi, for organising a very successful event.

It was great to see so many parents calling in to support us as well. The school community is thanked for their generous sponsorship support of the Heart Foundation.

### Winter Sports Catch Up

It is the time of the year to celebrate the early achievements of our winter sports teams.

Soccer, once again, a very popular sport. We have eight teams who are doing very well in their grading groups and the schools field on a Saturday morning echo with the sounds of enthusiastic side line support.

Strong interest continues in netball. Our three teams participate in the Minogue Park series of games on Tuesday and Thursday afternoons. They've made a tremendous start, doing very well during their grading games.

Earlier this week Newstead participated in the inaugural Rugby Day for South East Hamilton Primary Schools, hosted at Jansen Park. The team had five games and as the competition developed all players grew in confidence. They finished fourth out of eight teams in Division Two. Very well done! Many thanks to Matthew Keightley for coaching the team.

### Some History

#### Did You Know:

- The Livestock Improvement Centre was established in 1952, on a farm bought from a Mrs. Chamberlain.
- A hall was built in 1926 and was demolished in 1976. It was situated on the western side of the railway line.
- In 1935, a dairy factory was established by Mr. and Mrs. S. G. Lye. The factory was one of the first in NZ to produce pasteurised milk in waxed cartons.

The next meeting for the 125 years Celebration Planning Committee is Thursday 8 August, 7:00pm. All welcome!

## CHILDREN'S PAGE

### FALLING FROM THE TREE



*I feel myself losing weight, my blood is  
disappearing.*

*My sides are starting to curl, I rustle, I twist and  
turn, my friends are starting to drift away from me.*

*Will I be next? I'm starting to look like an old  
pirates map, I feel a little pale like a fainting  
queen. Suddenly...*

*I twist and turn. I fall down, down, now I feel  
like a flying carpet traveling with the wind.  
I keep falling down, down, black and white  
magpies swoop down at me ripping my veins,  
down, down, I'm starting to curl like I'm squashing  
every last bit in my body.*

*The green carpet is just there waiting for me as I  
drift towards it.*

*I fall into the lush green grass.*

*I'm transforming into a multi coloured leaf, pink,  
Brown, yellow, orange and red.*

*I feel a little tickle,  
its an insect family feeding upon  
the leaves, I think I've found a new adventure.*

**By Renee**

### Autumn ...

*makes me feel happy because I get to jump in the leaves,  
tastes like hot veges at breakfast time,  
looks like twisting falling leaves,  
feels like cold leaves on the ground  
sounds like the strong wind is blowing my jacket*

**By Rhys**

### Autumn...

*makes me feel happy because I get to watch movies inside  
tastes like hot meat for dinner  
looks like brown leaves from the trees  
feels like a cold icy nose  
sounds like falling rain on cold wet ground*

**By Jonathan**

### Autumn...

*makes me feel sad because winter is coming  
tastes like hot milo in the morning  
looks like bare trees and gold leaves  
feels like a cold icy nose  
sounds like leaves crashing together*





### **Notice of Pukeko Preschool AGM**

Pukeko Preschool's Annual General Meeting will be held on Tuesday 23 July  
2013 at 7pm,

at Pukeko Preschool, 26 Scotsman Valley Rd, Tauwhare.

Everybody is welcome to attend the AGM.

If you are interested in joining the Trust Board and would like more  
information,

please contact the Chairperson, Keren Savage on 823 1543.



#### Tauwhare Playgroup

We have had a fun and busy last month.

Play dough day was a great hit. We arrived with a batch of yellow and a batch of blue, and went home with a large batch of green. Thank you to Marilyn, our MoE Advisor for the lovely sensory objects you brought with you that day. There are some budding artists in our mix too, showing their talents with the felt pens, and glue sticks. Most of the dolls are in new outfits, and Thomas and his friends have been clocking up the miles around the train tracks.

A thank you also goes to Pippa and Phoebe for opening up their home for a day, while the glaziers installed the new windows at the church and hall. They look wonderful, and let in so much light.

Come along one Thursday and see what we are all about. We meet every Thursday from 9am-12 noon, at the Tauwhare Church hall; but come along anytime and stay as long as you want. Enjoy a free tea or coffee, chat and meet some new friends.

For more information, contact Karina Hayward on 824 0932.  
Like us on Facebook and keep up date with what is happening.



**Yardman**

#### **IT'S ALL ABOUT YOUR LAWN**

- Residential, Commercial & Lifestyle Blocks
- Covering the whole of Hamilton and outskirts

Using Walker Ride-On Mowers

Phone Tony today  
for a free quote on

**021 036 6758**

# TAUWHARE INDOOR BOWLING CLUB

Welcome to our May/June news, which is good news at the National Provincial, Eastern Sub Centre and Club level. Bankier Shield (8 men). The Tauwhare-Matangl team's challenge vs Tatuani resulted in a loss for our team.

Greenfield Shield (8 ladies). Our Tauwhare-Matangl team warded off a challenge by Tatuani by a very small margin. The next challenge will be by St Andrews (Hamilton).

The Eastern Sub Centre team (12 ladies) won the Grupen Cup for 2013. Good to see them retain the cup after winning it in 2012.

New Zealand Indoor Bowls Championships (held at Rotorua) - Singles (635 entries). Congratulations to Amber McNally who was awarded the cup for the Junior player who went the farthest in the Singles. Amber was in the last 32 players in the post-section play off. Rinks - Well done to the Arnold team who reached the last 16 in the Rinks Championship.

Waikato Junior Singles Championship - Amber McNally was Runner up. Once again - well done Amber.

Grateful thanks to all our members for their contributions to making our Triples Tournament a success. Indeed "many hands do make light work".

## From the records

- Committee meeting 14 June 1962 - *Memorial Shield*. Elaine Pope expressed a wish to donate a shield in memory of her late mother, Esme Pope. The club accepted her generous offer and it will be known as the Esme Pope Memorial Shield. It was suggested that it would be competed for annually in handicap singles.
- AGM 3 March 1977. At this point Mr C Fletcher nominated Mrs Pope as a Life Member. Seconded by I. Pizzini and carried unanimously.

With sadness I must report the death of Harry Fawcett in Hamilton earlier this month. Harry joined the club in the mid 1980's and was a member for about 10 years until he moved to Hamilton.

## Results:

### 23<sup>rd</sup> May 2013 - Open Triples Tournament

- Winners B Meads, L Stoble, Q Crosby (Gordonton)
- Runners Up M Plane, J Marsters, D Mills
- Best performing Tauwhare Team - R Bargh, J Cottle, Grant Goodare.

### 30<sup>th</sup> May 2013 - Club Night

- Winners J Arnold, A Vollebregt, N Stolwyk
- Runners Up Andrew McNally, J Cottle, D Pizzini

### 6<sup>th</sup> June 2013 - Esme Pope Memorial

- Winner B Meads
- Runner Up C Olsen

### 13<sup>th</sup> June 2013 - Club Night

- Winners J Bargh, H Bargh, L Coaton
- Runners Up R Coxon, R Bargh, C Olsen

## Upcoming Events

4 July 2013	Men's and Ladies Singles. <b>7:00pm START</b>
11 July 2013	Club Night
18 July 2013	Club Night - 3 Bowl Triples
25 July 2013	Open Triple Tournament. <b>A plate please</b>
1 August 2013	Club Night - Drawn Pairs

**Until next month - good bowling everyone.** Robin Bargh Phone 824 1819



**SPYVES PANEL SHOP**  
for all  
Panel and paint requirements



**AUTOROBOT CHASSIS**  
and  
**ALIGNMENT MACHINE**

Ph Ron or Karen 8241 890  
Fax 8241 892  
Mob 027 280 0346

*Jo Stockley* *Just ask!*  
**ADMIN PRO**

- Local Accounts & Office Support
- Your office or mine!
- Over 20 years experience

- ✓ Invoicing
- ✓ Accounts payable
- ✓ Credit management
- ✓ Bank reconciliation
- ✓ GST / PAYE
- ✓ Payroll



Ph: 07 8295829 Mob: 027 6950576  
E: jo@adminpro.co.nz

**COMPUTERISED  
BULK SPREADERS LTD**  
Cartage & Spreading



**FERTILIZER, LIME, UREA  
SPECIALISTS**

Competitive Rates

**PETER JONES**

027 496 3370 07 887 4000

26 years service in the  
Morrinsville district

**EUREKA  
POULTRY FARM**

13 Hooper Road  
Ph 824 1762

**NIC & MARIA STOLWYK**  
**Hobby Hens**



Young pullets from  
5 weeks to point-of-lay  
Great for lifestylers  
Bagged up chook manure  
Hours Mon-Sat 8-6

**Lawn Mowing  
And  
Gardening Services**



**Maurice Smith**

For free no-obligation quote:  
Ph: (07) 8241948 Mobile: 0274797282  
Email: [mfmitch@clear.net.nz](mailto:mfmitch@clear.net.nz)

*Ride-on mowing specialists.*  
*Give your lawn the perfect finish*

*The Beauty House  
& Gift Shop*



*Friendly, personalised service*  
*Great prices for all your beauty*  
*needs & a fantastic range of gifts*

**PHONE FOR AN APPT NOW**

(EFT-POS available)

Jacqueline Jones

1092b Tauwhare Road

Tauwhare Village

P: 07 8240950 M: 0274 853985

E: [thebeautyhouse@xtra.co.nz](mailto:thebeautyhouse@xtra.co.nz)



*Hair With Ease*

YOUR MOBILE SALON

Women's Cuts  
Colours Foils  
Kid's Cuts  
Men's Cuts  
Eyelash Tinting  
Eyebrow Tinting

Call Nicola For Appointments

PH: 0275580583

EMAIL: [NICOLA@WWW.WITH-EASE.CO.NZ](mailto:NICOLA@WWW.WITH-EASE.CO.NZ)

FRESH  
APPLES & PEARS  
STONEFRUIT IN SEASON



**NEWSTEAD ORCHARD**  
552 Morrinsville Road

OPEN MON-SAT.  
W J McMiken & Co  
Morrinsville Road  
Tel. 856 4478



**TAUWHARE HOME KILLS**

**TREVOR & LEONIE BRUNTON**

1126 TAUWHARE ROAD

PH: 07 824 0880

Fx: 07 824 0809



**Gayle Orr**  
 Spiritual Counsellor & Teacher  
 Working with angels to relay  
 Messages from loved ones  
 Personal Readings  
 Healing  
 Spiritual Counselling  
 Meditation & Relaxation Classes

**For a personal reading  
 phone: 07 824 1713**

**ROSS PUMPS**  
 &  
 Filtration Specialists Ltd



Servicing and installation  
 On all types of pumps  
 Full Water Treatment  
 Service Available

**DAREN ROSS**  
 Tel. 8241 726 or 0274 346 571  
 Fax. 8241 879

**CALF COVERS**  
 "Canvas, Jute, or satin  
 lined for Calf Club"

I also manufacture horse covers, trailer covers or any other kind of cover you may want. Good quality, P.V.C. horse gear bags — can also be used for dive bags. Good quality at reasonable prices.

**Phone Narelle Pollock  
 824 0736**



**CAMBRIDGE  
 CARPET  
 CLEANING**  
*Servicing the Waikato*

**Also**

- ✓ Upholstery Cleaning and Protection
- ✓ Flood Restoration
- ✓ Stain Treatment
- ✓ Auto and Marine Work
- ✓ Window Cleaning
- ✓ Senior Citizens Rates

**Phone Grant on 0275 542 116  
 Or 07 823 7031  
 Locally Owned and Operated**

**Local builder  
 Tauwhare Road resident  
 Registered Tradesman**



- Concrete work
- New homes
- Renovations
- Alterations
- Farm buildings
- Decks
- Fences
- Bathrooms
- Kitchens
- Roofing



**30 years building experience**

**Craig Griffin Builders Limited**  
 Phone Mobile: 027 279 2682  
 Phone/Fax After Hours: 824 1607  
 Email: craigandjackiegriffin@ihug.co.nz

**nzgarden sheds**  
*the best little Sheds around!*

Your local garden shed supplier of NZ made, self assemble Garden Sheds (Zincalume or Colour Steel)

**GET IN TOUCH...**

- \* EASY ASSEMBLY
- \* MADE TO LAST!

**Waikato Shed Company**  
 218 Hunter Road, Eureka,  
 Hamilton  
 Phone: 07 824 1045  
 Email: sales@nzgardensheds.co.nz

**EQUIRE FOR A BROCHURE NOW**

**Residential  
 Interior Design**

- Colour schemes and advice
- Home organization ideas
- Maximise interior space and use
- Personalise your home



**Phone Leanne Hilder  
 07 889 6646 or 021 911 621  
 Email: leanne.hilder@gmail.com**

**Scanlan & Jones**

Specialists in:

- ✓ Wood Fire Sales
- ✓ Wood Fire Installation/Repairs
- ✓ Hearth Manufacturers
- ✓ Outdoor Fire Installations
- ✓ Chimney Sweeping
- ✓ Heat Transfer Kits — Sales & Installation



Registered Installers  
 Over 17 Years Experience  
 Free Quotes

**Contact Justin & Brendon  
 0274 834 267 (day)**

A/Hrs: 07 824 0950 Fax 07 824 0951  
 Email: scanlan.jones@xtra.co.nz

Member of New Zealand Heating Association 

**HAIRFIELDS**  
 HAIR DESIGN  
 95 HOOPER ROAD  
 Sharon Laurent

Full salon facility in Eureka  
 Total hair care professional  
 with many years experience  
 Agent for Nutrimetics also



Open Tuesday to Thursday  
 Late nights Tues/Thurs  
 Tel. 824 1712 or 027 280 5978



**Eureka  
Storage**

Many options from 9m2 - 307m2  
Short term + long term  
Call me to discuss your requirements



**Cuneo Piedmontese**  
HEART-HEALTHY-BEEF

Pedigree + Commercial  
Purebreeds For Sale  
Bulls, cows + yearlings

**Don Knight 0274950535**

**117 Hooper Road, Eureka**

## *belles & brides*



*Hair - Makeup - Beauty Therapy*

[www.bellesandbrides.co.nz](http://www.bellesandbrides.co.nz)

Ph (07) 8241852 or 0226717588

**Belles & Brides** is the Waikato's most comprehensive mobile beauty service. We offer a huge range of beauty services including amazing discounted pamper packages and at-home pamper parties!

Jump onto our website and visit our facebook page to see our upcoming events, current specials and our full range of services!

## **MARKET PLACE**



### **FOR SALE**

House for sale in Tauwhare. Lovely four brm warm family home on approximately 0.7ha. Fully established paddocks and landscaped grounds. Sought after location in central Tauwhare Village - five minute walk to Decile 7 school and preschool. 15 minutes drive to Hamilton and Cambridge. Call Sheryl 824 0798 / 027 3222 622 for more info and to view.

### **FOR RENT**

Spacious 13 year old Hinuera stone home in Eureka.

**Features include:** 5 double bedrooms; master bedroom with ensuite and walk in wardrobe. Separate lounge and dining room, family room, study and sewing room. Granite bench top in kitchen, central vacuum system, two log fires and under floor heating in bathroom. Double garage attached with internal access. Skyline type garage with workshop.

Quiet location, off the main road. \$600 per week. Contact Lorae 07 884 5857.

## **EMERGENCY MANAGEMENT - NEW ARRANGEMENTS**

by Sue Edmonds

In March 2011 I did some investigations into who/what/where/when would happen at a time of some widespread local disaster, and wrote a piece for the Express about it.

As part of the ongoing cogitations by the updated Community Planning Committee, the question was raised again about what people should do, and what to expect in the way of help. So I've done some more investigating, and found that change is again coming up.

There is still an overarching organization known as the Waikato Civil Defence Management Group, with members from eleven local Councils, plus Police, Fire Service, District Health Board and St John Ambulance. The region is now divided into four sub-areas, Thames Valley/Coromandel (Thames-Coromandel, Hauraki and Matamata-Piako Districts, South Waikato District, Taupo District and Waikato Valley (Hamilton City, Waitomo, Otorohanga, Waipa and Waikato Districts (which is where we are). These sub-areas are still coordinated by the Group Emergency Management Office, which operates out of the Waikato Regional Council in Hamilton.

At that time the Group Emergency Management Office had one full-time manager, with several part-timers and some help from Regional Council staff members. A Ministry of Civil Defence and Emergency Management report done several years ago showed that the Waikato wasn't really taking Emergency Management and its follow-ups seriously enough. So funding was increased along with resources, and things got cracking.

These days there are seven full-time staff organising training, exercising, information systems, operations, lifeline utility coordination and business outreach. Other managers are now trained to handle coordinating response and recovery following disasters, public information management and public education and awareness. And they've got properly equipped premises in a building at the south end of Victoria Street, which the Regional Council has leased following the closure of part of their home building for 'weatherproofing'.

This site is close to all the other resources they may need, and has been created to be flexible in responding to a major disaster. The spaces can be multi-purpose, or used by other agencies if necessary.

But a further change is about to happen on 1 July this year. Possibly due to the northern additions to the area included in Waikato District Council's patch, the group of five are separating out into one for Hamilton City Council, one for Waikato DC, and a new shared arrangement being set up for Waipa, Otorohanga and Waitomo Districts..

A new appointment for a civil defence coordinator for WDC is about to be made, and this person will be physically located in their Ngaruawahia premises. When it's all settled, about mid-July, we shall then have to ring the Waikato District Council offices in an emergency or disaster. We'll keep you posted on the exact details when the arrangements are sorted.

In the interim, because we no longer have a State school, we are making arrangements for a new venue for our Warden post. In the event of whatever kind of disaster befalls us, an expert team will be sent to there to set up a control post.

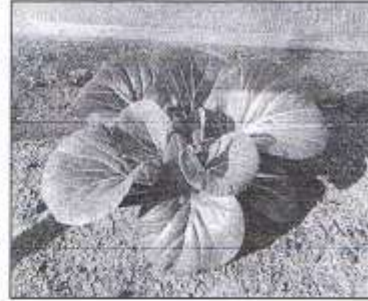
So overall, we can be sure that the people and systems which cope in emergencies will be well-organised, trained, equipped and that 'What happens afterwards' is also going to be much more efficient and effective.



## IN YOUR GARDEN

I know, now that it has turned cold it is hard to get enthused about the garden, but we really need to keep at it.

**Vege Patch:** Feeding, it's no use using slow release fertilizer at this time of the year because as it breaks-down the ground temperature is too cold to retain the nutrients and they just get washed away, however it's beneficial to use liquid fertilizer to support veges such as brassicas and winter lettuce. You can use allsorts of liquid fertilizers, but it is very easy and simple to make your own. Now is a good time to get started as organic material will break down slowly in the cooler weather so it will be ready for the spring growth. Use any organic matter, spray-free lawn clippings, fish scraps, kitchen waste but not meat.



**Comfrey Tea:** Chop off the leaves and pack them into a lidded bucket and fill with water, put the lid on and leave in a warm place (it will speed up the decomposition). Because comfrey has a long tap root it draws all sorts of goodies from deep in the soil, so the leaves are packed with nitrogen, potassium and very useful micro-nutrients.

**Seaweed Tea:** Is made in much the same way, firstly wash the seaweed thoroughly to remove the salt and chop it up roughly.

**Poo Tea:** Use horse, cow, sheep, or alpaca manure and fill a porous bag and suspend it in a barrel or bucket filled with water.

Most of these teas are high in nitrogen, so they are great for leafy crops, but they also contain loads of beneficial flora and fungi which will increase the biodiversity of your soil and benefit everything you grow.

**Final Tip:** Always use a container with a lid and keep them down wind while brewing, the smell is repulsive, if it gets too bad stir tea every few days as organic matter smells worse when it's breaking-down, so stirring should help. When using your tea, dilute it about 1 to 10 and apply to the roots or as foliage feed.

The soil is wet and cold so pick only the right crops to plant, try spinach, cauliflower and broccoli, don't sow too much as it will soon be time to plant spring crops.



It's now time to start pruning roses. If you have time, try to collect fallen rose leaves so that the spores don't remain on the ground to re-infect your roses once spring comes. Use a copper and oil spray and spray the ground surrounding your roses as well as the stems and crowns as this is also where the spores will hibernate over winter. Lime sulphur sprays are used against scale, fungus and other insect pests. It is worth noting that the scale doesn't disappear but remains on the stems and will only weather off in time.

Until next month, Happy gardening, Jennifer

# LADIES A PLATE

## Lemon Loaf

1½ cups flour	¼ teaspoon baking powder
½ teaspoon baking soda	¼ teaspoon salt
3 eggs, room temp	1 cup sugar
2 tablespoons butter, softened	1 teaspoon vanilla extract
2 teaspoon lemon extract	½ cup lemon juice
¼ cup oil	zest of one lemon
<b>Glaze:</b>	
1 cup powdered sugar	2 tablespoons whole milk
¼ teaspoon lemon extract	



1. Preheat oven to 350°. Grease and flour a 9 × 5 loaf pan. In a large bowl, combine flour, baking soda, baking powder and salt. In a medium bowl, combine eggs, sugar, butter, vanilla extract, lemon extract and lemon juice with a mixer until blended.
2. Pour wet ingredients into the dry ingredients and blend until smooth. Add oil and lemon zest and mix well.
3. Pour into loaf pan and bake for 45 minutes until toothpick comes out clean. (It took an hour in my oven).
4. Glaze – whisk to combine
5. Remove from oven and pour glaze over it, then cool in pan on a rack.

## Orange Sultana Cake

1 Orange (unpeeled)	1 teaspoon Baking Soda
125 gms softened butter	2 eggs
1 teaspoon vanilla extract	2 cups flour
1 cup sultana	1/2 cup walnuts (optional)



1. Preheat oven to 160°C. Grease a 20cms diameter cake tin and line base with baking paper
2. Cut the orange into quarters, remove the pips and whizz in a food processor until finely chopped
3. Dissolve baking soda in 1/2 cup water and add to the food processor with butter, sugar, eggs, vanilla and flour. Whizz to combine, add sultanas (walnuts) if using, and stir with a spoon or pulse several times to just combine (don't whizz them or they will break up)
4. Pour into prepared cake tin and bake until a skewer inserted into the centre comes out clean. (about 1 hour)
5. The cake will keep in an airtight container for up to a week or can be frozen.

# OATS



Botanical name: *avena sativa*

Comforting and sustaining, oats also bring a host of health benefits. Oats are high in immunity-boosting vitamin E and contain flavonoids called avenanthramides—potent antioxidants which help to break down cholesterol build-up and are thought to prevent cancer. Oats are high in fibre, so have laxative properties and are also rich in silica and anti-inflammatory mineral which soothes the digestive tract. Packed with B vitamins, oats are useful for easing stress and can aid weight loss as they release their energy slowly, staving off hunger pangs.

The main feature in oats is a soluble fibre compound called beta-glucan, which decreases the glucose and insulin response after eating. This action makes it a beneficial food for diabetics or those with blood-sugar imbalances. Oats also enhance the immune system and significantly lower LDL (bad) cholesterol levels.

**NUTRIENTS:** Vitamins B1, B2, B3, B5, B6, E, K, biotin, folate, calcium, copper, iron, magnesium, manganese, phosphorus, potassium, selenium, silica, zinc, fibre, protein, complex carbohydrate.



Oats can be added to your bread and sprinkled on top, either whole or oat bran.

Oats can be used to ease eczema—tie a muslin bag of oats over the tap when running a bath and soak in the water.

Oats also make a tasty muesli by adding other grains, mixed nuts and fruits; you can also toast in the oven on a very low heat and add honey, keep in air tight jar.



CHERYL MCFARLANE

## On the home front.....

With winter well and truly here it's a good time to enjoy indoors looking at the importance of colour and the varying ways you can use it to help create warmth and personality in your home.

Often we don't put a lot of thought into this and it can be simply because we don't know where to start. Colour can change a look and feel instantly and impact a whole environment. There are several ways you can think about this to achieve your desired outcome.

The first very effective way is to look around your home at all the things you love, e.g. it could be your favourite chair, does the colour style or pattern spark something, or a serving dish with colours that appeals, a picture you couldn't be without, this is all building your personal colour palette and once you have that bit by bit you can build personality through colour /style/pattern in your home.

Some like a neutral, monotone palette often calming, simple and adds flow, this look is created by using a neutral colour e.g. Resene Spanish white on doors and skirting's, half Spanish white on walls and quarter on ceilings there are many varying degrees on how people use the same colour but use shading differences to get this look, its easy and allows you to put colour through curtains, cushions, and accessories. Colour can be easily changed this way so it often appeals to home sellers and a minimized look can also be very modern.

Colour can be personal it can create feelings of warmth through rich reds, freshness with crisp pastels, cleanliness and space through whites of varying shades. So considering your area and how colour could impact your look is valuable.

Colour part 2 to follow - How to use colour

Leanne Hilder



## 48 Hour Film Competition

**Team Name:** Elysium Exit

**Film:** The Empath

**Team:** Jordan Browne, Jade Browne, Jake Ngawaka, Daniel Trainor, Moehau Hodges-Tai.

**Awards:**

AUT Best Director

Best Original Score

Best Art Direction

Canon Regional Best Cinematography

Winners of Hamilton Final



"The whole process of making the film was really collaborative, we didn't have any set roles and the whole project from the idea to the final cut evolved out of everyone's thought processes. Having a team on the same page about everything is what led to its success for me." - Jordan

We wanted to make a film that would leave the cinema with the viewer, a film that wasn't too obvious about everything. The meaning of our film was open to interpretation, and I feel this created discussion amongst members of the audience. - Dan



"For me it was all about trust. Trust in an amazing team of film makers who are able to share a common vision. Being able to honestly and actively critique our work as it came together, and having confidence in the work and ideas of each other, that's the real gold. To me the film is the delightful side effect of a dynamic and constructive collaboration" Jake

"We spent a lot of time developing the 'look' of the film. There was a big focus on cinematography which involved a lot of lowlight shots, experimenting with depth of field and even filming underwater. It's really about creating memorable images that affect and challenge the viewer." - Jordan

"Our motivation was to create something raw and real; something that would evoke emotion and impact our audience. To me that's the whole point of creative media" - Jade

"We wanted to create a soundtrack that was unified with the visual elements, not only supporting the imagery on screen but also driving it. Most of the music was made up of guitars and ambient drones floating between subtle and beautifully abrasive." Jordan

"It was such a humbling and incredible moment to see our film come up on the big screen." - Jake

"The challenge of the competition was of course trying to create something within the allocated 48 hours. All of the teams were also given a genre, prop and line of dialogue which we had to include; for us we wanted to incorporate these in a creative yet subtle manner. The competition as a whole was an amazing experience and provided the motivation to go out and make something." - Jade



"One of our key focuses was to keep it original and have an original kind of style being more suggestive than literal. We wanted to break any predictability through the editing and cinematography of the film" - Moehau

**Congratulations to Jake who lives locally on Waverley Road, where the film was edited and partially shot. Good luck for the national finals.**

**CO Comment**

**Try this out – it could save your life**

I struck on something a couple of weeks ago that will make you squirm in your rocking chair. You see I asked farmers at one of my discussion groups recently to think about their farming system and try and describe some of the KPI's or key factors that would help them know if they are at an optimum level of intensification for their farm. I am mainly referring to the level of supplements imported.



Or put in another way "how would you know you are in the "sweet spot" with the purchase and use of supplements?" How do you know whether you should be buying more or less supplements for your farm.

It surprised me the level of initial 'push back' from farmers present. "You can't do it as every farm is different" was the initial response. I kept persisting. At the end of it all I had farmers come up to me and say "that was quite hard. I couldn't really answer it properly". I wasn't trying to be smart or difficult, but don't you think it is a fair question to ask? How otherwise do you make decisions on supplement purchases.

I will write about it further next month but in the meantime please have a go at listing some things you should consider including some that can be measured. As a clue one thing would be the cost per Km of DM purchased. There are many other angles to this so keep adding to the list.



**Situation on Farm**

Pasture growth continues to be above average for June and pasture covers are generally at or above normal start of calving targets. Body condition, generally, is quite good and better than normal. Make sure you have your spring rotation planner in place to assist with the grazing management discipline over this tricky next 2 months. All ducks are in a row at present. Pasture covers, cow condition and the prospects of a good milk price. Good managers will ensure that these positives are not lost no matter what the next 2 months throws up. Good luck!

**Phil Irvine**  
Senior Consulting Officer  
DairyNZ  
0264839820





## NEWSTEAD VETERINARY SERVICES

161 Morrinsville Road, Silverdale, Hamilton 3286  
Phone: 07 856 4522 (24 hours) • Fax: 07 856 9487  
enquiries@newsteadvets.co.nz • www.newsteadvets.co.nz



### Taking Care of Your Elderly Cat

The fires are stoked and we can all guess who is likely to be next to the fire on these cold evenings...yes, your cat! Elderly cats have some important health issues that need to be monitored to ensure a long and healthy life.

#### Common Ailments



**Dental disease** is common problem in old cats. Unlike us, they don't clean their teeth daily and over time can get build up of tartar. This can lead to gum disease and recession and eventually tooth loss. This process is reversible if caught early enough. Signs that your cat might have teeth issues include:

- lack of grooming
- not wanting to eat
- smelly breath
- excess drooling

**Arthritis** is also seen in cats, although it is commonly thought to be an old dog's disease. Arthritic cats have difficulty turning to groom themselves and are less active. They stop being able to jump up as high as they were able to or fall when attempting to jump and end up climbing up. There is treatment available for this condition to help your elderly cat cope with this debilitating condition.



Most elderly cats have some form of **kidney disease**. It is a very common complaint in an older cat. Clinical signs of kidney insufficiency and/or failure include increased thirst as the kidneys are no longer able to absorb water from the urine. The urine becomes very dilute and so the cat will urinate more frequently and in larger volumes. The litter tray will become very full, very quickly. Although there is no cure, there are diets and drugs available which can help support and stabilize the diseased kidney.

Hormonal diseases include **hyperthyroidism**, due to an over active thyroid gland, and **diabetes**. Again, these diseases can be treated with both drugs and dietary management.

#### How can you help your aged cat?

Even small differences can make a big difference to their quality of life.

- Feed good quality Senior cat food, eg. Iams Senior, Hills Active Longevity, Hills Mature, Royal Canin Senior.
- Help them groom with a good brush every few days – they will really enjoy this time with you.
- Have their food at floor level, or give them a ramp to get up to higher places.
- Have their food and bed closer so they don't have to travel long distances between their bed, food and litter tray, if they use one.
- Regular check ups with your local vet

## NEWS FROM YOUR WAIKATO DISTRICT COUNCILLOR

A number of very productive meetings have been held to discuss the **Eureka Community Plan Review**. The next stage of the process is to survey community opinion on a number of matters being considered, and prioritised, for the updated Plan. There is a note from the Chair of the Committee, Sue Edmonds, in this issue of the *Express*. The Committee have created a survey document and hope as many of you as possible will complete it by 12 July on the web link provided <http://www.surveymonkey.com/s/CPB67WT>

The 2013/14 **Annual Plan** consultation process ran from 2<sup>nd</sup> April to 6<sup>th</sup> May. 272 public submissions, along with associated documents, were either read or considered during hearings held from 20<sup>th</sup> – 22<sup>nd</sup> May. After deliberations the Draft Annual Plan was then updated. Council worked hard to keep the general rate increase to 1.87% while still maintaining the services the community expects. At the full Council meeting on 25 June the 2013/14 Annual Plan was approved with the general rate set at \$238.75 per \$100,000 of capital value, based on the existing rating bases at 30 June 2013. A Uniform Annual General Charge of \$410.54, which is not linked to property values, will be levied on each rating unit. The full details of charges will be available on Council's website.

The first **rates notice** for the period covering 1 July 2013 – 30 June 2014 comes out in August. The best way to ensure you don't miss a rates payment is to pay by direct debit using the **Easy Pay system**. You can pay weekly, fortnightly, monthly or by instalment (every four months). For more information look on the website address [www.waikatodistrict.govt.nz/Services/Rates.aspx](http://www.waikatodistrict.govt.nz/Services/Rates.aspx) or phone or call in to one of our offices.

**Dog registration** is due at the end of June – to qualify for the discounted fees dog/s need to be registered before 1 August. It is a legal requirement for any dog born or registered after 1 July 2006 to be micro chipped and our Animal Control team can help with information on this service. The team are also looking for opportunities to speak to community groups, schools, marae etc to educate adults, and children, on how to act around dogs. Contact the team on 0800 492 452.

During winter, particularly after storms, **Waikato roads can be affected by hazards** including flooding, slips, fallen trees, ice etc. We would be grateful if residents could report any potential traffic hazards by phoning Council at any time on 0800 492 452. A list of known issues affecting our roads can be found on our website [www.waikatodistrict.govt.nz](http://www.waikatodistrict.govt.nz) - click on *Road advisories* in the *links* section.

Council is involved in a number of **environmental projects** throughout the district. Thousands of native trees will go in to the ground this winter to improve the environment in our District. We are also working with RiverCare on a Waikato River Authority funded riparian restoration programme which covers sites from Ngaruawahia to Tuakau.

You may have seen mention of **Matariki celebrations**. Matariki is known as the Maaori New Year. Matariki is a small but distinctive star cluster whose appearance in the sky marks the start of a new phase of life. In ancient times Matariki arrived at the end of the harvest and was therefore a time of plenty for Maaori, a time of sharing and celebration. A series of events are being run throughout the Waikato district to celebrate Matariki in June and July including a **Festival of Lights on 6<sup>th</sup> July** at The Point, Ngaruawahia. A full programme of events can be found on [www.waikatodistrict.govt.nz/Home/Waikato-District-Matariki-Festival-2013.aspx](http://www.waikatodistrict.govt.nz/Home/Waikato-District-Matariki-Festival-2013.aspx)

**More next month –**

**Rob McGuire - Councillor Eureka Ward**

Ph. 824 3696 / fax 824 3645 / Mob 0274 970 966 / email [robmcguire@xtra.co.nz](mailto:robmcguire@xtra.co.nz)  
Waikato District Council free calling number 0800 492 452





# Maurice Jackson

phone 027 271 6846

[jackson55@xtra.co.nz](mailto:jackson55@xtra.co.nz)



**Agriculture Contract Spraying For Urea and Eczema, Power Harrowing  
Experienced Rural And Lifestyle Block Fencer**



## CTAS™



Specialists in:

- Professional Internet based systems development
- Web Site Development, Domains and Hosting
- TXT and Email Alerts and Reminders
- TXT Shortcodes for your business or club
- Flight Status by TXTing your Flight to 8808
- Live Video and Audio Streaming on the Internet

Phone: 07 824 1025  
Email: [grant@ctas.co.nz](mailto:grant@ctas.co.nz)



Go to [www.ctas.co.nz](http://www.ctas.co.nz) for more information



Associate Member of IT Professionals NZ

CCC CompTIA  
Network+ Certified



## Newstead Veterinary Services

161 Morrinsville Rd (SH26)

Phone (07) 856-4522 Fax (07) 8569487

email: [admin@newsteadvets.co.nz](mailto:admin@newsteadvets.co.nz)

[www.newsteadvets.co.nz](http://www.newsteadvets.co.nz)

We offer a comprehensive range of services for dogs, cats and small pets.

- Puppy pre-school classes
- Comprehensive range of pet care products and pet food
- Nutritional advice with onsite pet dietician and free weight clinic
- Cremation with a local pet crematorium, with optional return of ashes
- Isolation ward
- NZVA Microchipping Accredited Practice
- MAF Accredited vets for pet export certificates to Australia
- Ample parking

**We believe that pets are important members of your family.**



# McFarlane Contracting

*Building Partnerships with Farmers*



**Maize Silage for sale**

*Don't delay...  
book your job with us today!*

**(07) 824 1186**


mel@mcfarlanecontracting.co.nz  
870 State Highway 26, Newstead  
R.D. 6, Hamilton

**Our Services:**

- Maize & Grass Silage
- Full Cultivation
- Cartage – Truck and Tractor
- Hay, High Moisture Hay & Haylage
- Digger

**We Offer:**

- A Professional Service
- Experienced Drivers
- Quality Machinery





**JBVISSE VETS**

For your Livestock & Pets

07889 0414  
0800 VISSER

[jbvisservets@xtra.co.nz](mailto:jbvisservets@xtra.co.nz)

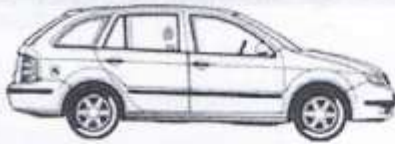



See Us For All Your Animal Health Needs Including:

- \*Farm/In-Calf Consulting
- \*Trace Elements
- \*Dairy Management Advice (Cows & Goats)
- \*Scanning Dairy Cows
- \*Lame Cows
- \*Animal Health Products (drench etc)
- \*Soil & Pasture Analysis
- \*Lifestyle Block Service (all animals)
- \*Pet Consultation/Vaccination
- \*Pet De-Sexing
- \*Pet Nutrition
- \*Pet Dental

SERVICING MORRINSVILLE, EAST HAMILTON, GORDONTON,  
ORINI, TE AROHA, TAUWHARE, TAUWHARE, PATOTONGA  
AND EVERYWHERE IN BETWEEN!

For your WOF and Service needs...  
For your Petrol and Farming needs...



Come see us...

## EUREKA MOTORS

1291 Morrinsville Rd, Eureka

07 824 1773

Hours: Mon-Fri 7:30am to 6pm

Sat 8am to 12 noon

**GOLDSEAL**  
Rustproof  
Specialists

### WALLING CONTRACTING LTD

'YOUR PROVEN LOCAL ONE STOP CONTRACTORS'

WE CAN OFFER YOU THE FOLLOWING SERVICES:



- \*Grass Silage
- \*Ploughing
- \*Rotary Hoeing
- \*Ripping
- \*Undersowing
- \*Baling & Wrapping
- \*Digger (12 Ton)
- \*Grass Crop Sales

- \*Maize Silage
- \*Power Harrowing
- \*Discing
- \*Maize Planting
- \*Roller Drilling
- \*Power Harrow/Seedbox
- \*Shavings & Sawdust
- \*Maize Crop Sales



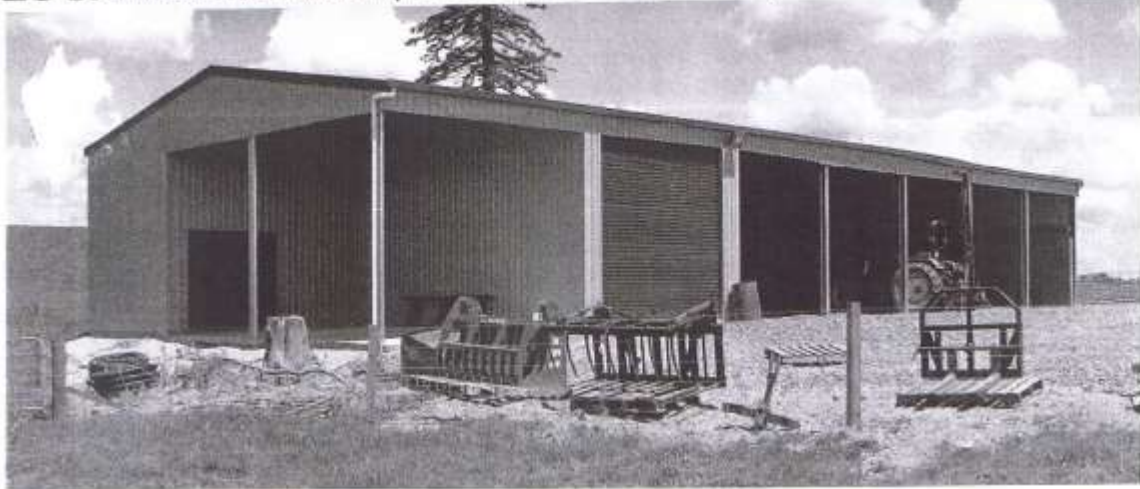
FOR ALL YOUR CONTRACTING NEEDS

PHONE LEN OR BECKY

ON

**824 0894** (anytime)

## LOCAL COMPANY, LOCAL PEOPLE, LOCAL SERVICE



### FULL DESIGN & BUILD OR KITSET ONLY OPTIONS



### FREE, NO OBLIGATION DESIGN & QUOTE SERVICE

If you need a shed that's built to last from top quality materials you can't go past our sheds. With heavy duty steel framing and Zinalume or Coloursteel cladding you will get the strength and durability that lighter steel and timber framed buildings simply can't compete with.

It's not enough too just have a great building system. You also need professional people with the knowledge & experience to deliver a great shed, done right. Being backed up by an international company means Waikato Shed Company is supported in their delivery of high quality building solutions. The end result is that you can have total confidence in the building design, construction process, & the people you are dealing with. It's the strength of our "chain" that is our advantage.

To discover the benefits of owning a Waikato Shed Company shed visit our website now.



Freephone **0800 555 147**  
218 Hunter Road, Eureka  
[www.waikatosheds.co.nz](http://www.waikatosheds.co.nz)

**WAIKATO SHED**  
COMPANY  
great sheds, done right!  
Hamilton • Taupo

# Now Is A Great Time To Add Value To Your Property With A New Shed

Waikato Shed Company offers a true custom design & build service that ensures you get the very best shed for your needs that is outstanding value for money. We listen to what you want because we understand that one size does not fit all. In fact in over 5 years we have never built the same shed twice.



## FULL DESIGN & BUILD OR KITSET ONLY OPTIONS

- American Barns
- Aircraft hangars
- Workshops & storage
- Stables & arenas
- Industrial buildings
- No set size restrictions
- All steel construction
- Clear span (no web trusses) up to 35m
- Up to 7m eave height
- Any length
- Integrated mezzanine floor
- Full range of cladding colours & choices



## FREE, NO OBLIGATION DESIGN & QUOTE SERVICE



Freephone **0800 555 147**  
218 Hunter Road, Eureka  
[www.waikatosheds.co.nz](http://www.waikatosheds.co.nz)

**WAIKATO SHED  
COMPANY**  
great sheds, done right!  
Hamilton • Taupo